



Bethany Lutheran School
Long Beach, CA

BEAR FACTS

Issue 2: September 6, 2022

FROM THE PRINCIPAL

"Be it known to all who enter here that +Christ+ is the reason for this school. He is the unseen but ever present teacher in its classes. He is the model of its faculty and the inspiration of its students."

This sign hangs in the school office and is a great reminder to students, parents and staff just what we're all about here at Bethany. My prayer is that you will see evidence of this every time you come on our campus!

We've had a great start to our school year. Thank you for your patience and cooperation as we all settle into our routines at home and at school! Thank you, too, for your smiles and words of support to the staff and faculty. We appreciate you!

Dr. Mary Fink, Principal

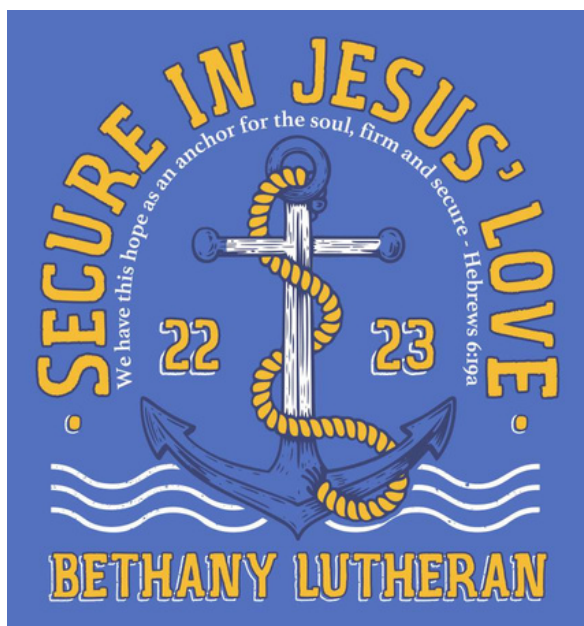


Need lunch?
Sign up for [Choicelunch](#) using our code:
bethany

The **Bear Facts** is our weekly school newsletter. We will email it every Tuesday, post on our website and app AND text you a link so you can read it on your phone! (Can you tell we REALLY want you to read it every week??)

COMING UP

- **Sept. 6**-8th Grade DC Meeting
- **Sept. 8**-New-to-Bethany Parent Zoom-6:30
- **Sept. 10**-Raise a Glass Fundraiser
- **Sept. 15**-6th Grade Camp Meeting-6:30
- **Sept. 16**-School Photo Day!
- **Sept. 16**-Child ID/Fingerprinting
- **Sept. 19-23**-7th Grade Camp
- **Sept. 23**-Minimum Day-Noon Dismissal
- **Sept. 26-Oct. 7**- MAP Tests
- **Sept. 27**-PTL Meeting
- **Oct. 5-7**-5th Grade to Astrocamp
- **Oct. 13**-Makeup photos
- **Oct. 14**-Jog-a-thon
- **Oct. 14**-Minimum Day-Noon Dismissal



Our school theme this year reminds us that Jesus' love for us is an anchor, firm and secure. Theme t-shirts are coming soon!

COVID Safety

If your student develops symptoms, please keep him/her at home. Obtain a COVID test kit (available in the school office) and test for COVID.

A student may return to school when:

- Symptoms have resolved and the student has been fever-free for 24 hours.
- The student has a negative COVID test after Day 5 OR it has been 10 days since symptom-onset.

If your student has been exposed to COVID, test on Day 1 and again on Day 5. If no symptoms develop and the student tests negative, he/she may continue to attend school.

If you have further questions, please contact the school office.

Praying for a healthy school year!

Camp/Outdoor Ed Meetings

Parents, please plan to attend the mandatory information meetings for these events:

8th Grade: Sept. 6, 6:30

6th Grade: Sept. 15, 6:30

Drop Off/Pick Up

We've been so pleased with how smoothly drop off/pick up has been going. Great job, parents!

Just a couple of reminders:

- The rolling gate opens at **7:45** every day except Wednesday when it opens at **8:15**. If you arrive before then, please walk your child to the EDC gate for check in.
- If you are driving through to drop off your child, please drive to the EDC tables before letting your child out of the car.
- In the afternoon, the rolling gate will stay closed until all students are safely out of the way. Sometimes that means it won't open until 3:10 (if we have PE happening outside.)
- THANK YOU for keeping **both** driveways clear for the Child Study Center next door as you're lined up on Clark Ave.
- The parking lot speed limit is 5 MPH for the safety of your children.

Raise a Glass

**Join us as we Raise A Glass!
to Student Success!**

This upcoming event is on Sat 9/10 and tickets are available at tinyurl.com/2022RAG. Auction items include sports tickets, a weekend in Vegas, dinners in home and brought to your home, restaurant gift cards, a diamond necklace and "Pedicure with a Pastor". You must attend Raise A Glass! to find out which pastor is offering a pedicure 😊

Volunteers are also needed!

If you've got the time and gifts to help make this event a big success please choose a role here:
<https://www.signupgenius.com/go/30E0F4DABAE2CA0FD0-raise2>



School Photos

School pictures are scheduled for Friday, Sept. 16. Please avoid out-of-school appointments that day. We do have a make-up day for absent students, but they will not be in the class photo.

Your picture package is pre-paid with your registration fee. You may also order additional prints.

Students should be in uniform dress for photos.



Welcome!

New-to-Bethany Parent Orientation is scheduled for Thursday, Sept. 8 at 6:30 PM by Zoom. (We will email you the link later.)

This informational meeting IS REQUIRED and it is important that one or both parents attend. You will receive your electronic copy of our Parent Handbook, meet members of the staff and Bethany community and hear about many of the happenings here on the Bethany campus.

We're looking forward to seeing you!



RaiseRight™

Formerly ShopWithScrip

Raise Days (formerly ThankScriping Days) are coming Thursday and Friday, September 15 - 16! (Preview day on the RaiseRight app on 9/14)

This is a two-day bonus event with many brands offering an increased rebate. Take advantage of these bonuses to make your Scrip purchases count even more! This is an online event - good for eGift cards and reloads only. You need to have an online account to participate, so if you have not already created an account - now is the time! I recommend the RaiseRight app for its on-the-go convenience. You can also make purchases on RaiseRight.com. Mark your calendar and get ready to boost your rebate!

Raise Days coincides with the Back-to-School Gift Card Give-Away - make your purchases count and be entered to win! See info on the next page.

Call or email me with any questions you may have or to get the enrollment code.
Happy to help!

Ruth Lopez, Scrip Coordinator
rlopez@bethanylutheran.org
562-420-7783 ext. 58

FISH Hours

FISH stands for "Families Involved in Service Hours." Each Bethany family is required to give 5 hours of service each year. (Many of our families serve many more than 5 hours!) You can serve at events, drive for a trip/sport, bring in classroom supplies, assist your child's teacher and so much more.

You can log your FISH hours from the [Bethany website](#) OR from Gradelink. We'll send you a "FISHing Report" each quarter to let you know how many hours you've served.



CHAPEL OFFERING

For August/September we will be donating our chapel offerings to [Lutheran Immigration and Refugee Service](#). Their "Neighbors in Need: Ukraine" program will help provide essential support for newly arrived families, including emergency medical care, temporary housing, financial support for basic necessities, and more.

Chapel offerings are entirely voluntary, but we encourage you to support this worthy aid organization!

Middle School Corner

Advisory Teams!

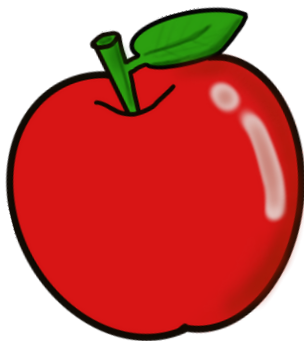
Every middle school student is a member of a multi-grade Advisory Team. Each week in Advisory, the students check their grades using Gradelink and graph their grade percentages on an online graph. Plus, they will check their school email account to practice building these skills for high school. The teams also focus on building skills in areas like social and emotional development, growth mindset, and test-taking skills.

Throughout the year, the teams will participate in a few team tournaments that provide them with the opportunity to be a part of team, grow their communication skills, and have a good time.

Advisory Team leaders include (and each team has a color as well):

Mr. Morner (orange), Miss Einspahr (blue), Mr. Brege (red), Mrs. Evans (green) and Mrs. Moorman (yellow).

Last week the 6th graders joined their Advisory Teams and everyone received sticky notes and a highlighter in their team color. We also celebrated with Otter Pops! Now the teams will get to work on choosing a team name - let the fun begin!



Back to School Gift Card Give-away!

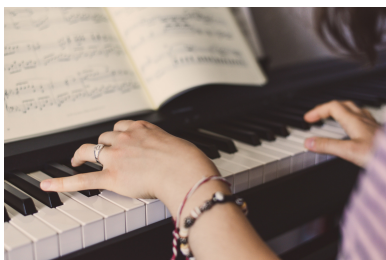
Two ways to enter:

1. Buy Scrip September 12 - 16 (one entry per total purchase)
2. Show me your RaiseRight app! (App must indicate enrollment in Bethany's program / One entry per family for app)

Grand Prize: Your choice of \$50 in gift cards

Two other lucky winners will be awarded \$25 gift cards.

Drawing will be held on Wednesday, September 21 at flag assembly.



Music Academy

Bethany's Music Academy provides extra-curricular music instruction to students in Grades 2-8 after school, M-F between 3:15 and 6:30 PM.

We have Christian instructors who are professionals in their field and offer lessons in piano (Grades 2 and up) and trumpet (4th grade and up.)

Tuition is \$300 per semester plus a \$25 registration fee which covers 12 lessons each semester.

Brochures and enrollment forms are available in the school office or [on the church website](#). Enrollment forms are due September 9.



Girls and boys around the world have experienced the transforming power of the Gospel because a child, family, church, or group lovingly packed a shoebox gift. Bethany students will participate in a giant packing party on November 16, transforming empty shoeboxes into fun gifts.

Last year, our students packed 220 boxes and each box bore the handprints of one of our preschoolers with the message - "Place your hand on our handprints and think about us. We prayed for you. Jesus loves you and so do we."

During September, you can help with donations of school supplies - pens, pencils, block erasers, sharpeners, notebooks, markers, colored pencils, or small calculators (dollar store calculators are fine). Kindly drop off items in the Operation Christmas Child container in the school office.



Parents, you are all members of the Parent Teacher League, our amazing group of parent leaders/volunteers and an important part of making Bethany such a special place.

Our first PTL meeting of the school year will be on Sept. 27. Watch for more details in the weeks to come!



CALLING ALL DADS AND THEIR DUDES & DUETTES!

Sunday, October 9, 2022 from NOON to 1:30PM, is a Day with Dad...or Grandpa, Uncle, Godfather, any other special man in your child's life. ALL ages are welcome!

We will be meeting on the field, BBQ'ing, enjoying good food, digging into a devotion, games, and doing a fun DIY project that will go home as a keepsake.

Food Menu: Burgers, Hotdogs, Lemonade, Water, Chips and Fruit.

Register now, so we have a head count and have enough supplies and food on hand. Registration closes on Sunday, October 2nd.

<https://bit.ly/daywithdad2223> or use this QR Code:



Cost for this event is free, but we are accepting FREEWILL donations. All donations received will help offset costs AND any proceeds will go to support Bethany's High School Youth Group as they prepare to attend the LCMS Youth Gathering in New Orleans, Louisiana.

Questions regarding this event? Please contact:
Alissa Brege at abrege@bethanylutheran.org or call (562) 421-4711, ext. 13.



Permanent Impressions

A CHILD SAFETY COMPANY

SEPTEMBER 16th

Please call for additional payment options

Dear Parents & Guardians:

The safety of our children is a constant concern for parents, especially when they are unable to be with their child. In an effort to maintain your child's safety as a high priority, we are offering a Multi-Modal Biometrics Safety Program to all children and their siblings. In the event of an emergency, time is the single, and most crucial element. Gathering essential information for law enforcement personnel is time consuming and can be difficult to accomplish during a stressful situation.

Permanent Impressions offers the most comprehensive Child Safety Packet available. All of the information necessary for the expeditious and accurate identification of your child is at your fingertips; organized, compiled, and formatted specifically for the Department of Justice database and law enforcement agencies in and outside of the US.

The Permanent Impressions Child Safety Packet is superior to other programs offering only a thumbprint on a license-type ID card. In the event of an emergency situation, a thumbprint alone is not sufficient. Additionally, an improperly administered fingerprint is not searchable through the Department of Justice database. In order to capture all ridge characteristics and detail within each fingerprint, it is imperative to have your child's fingerprints recorded properly by trained law enforcement officers or individuals with an expertise in fingerprint analysis and identification.

A private organization comprised of off-duty police officers, court certified fingerprint/forensic experts, and former law enforcement, Permanent Impressions will administer and process your child's safety packet properly and thoroughly. We capture all fingerprint impressions, palm prints, writer's palm, foot impressions, iris scan and facial recognition on site. **We do not request any personal information and all details remain confidential.**

Please review the enclosed information regarding the Permanent Impressions Child Safety Program specifics. If you wish to participate in the program, complete the form and return it to your child's teacher or school office, along with a check for the selected amount. On the appointed day, Permanent Impressions will come to your child's campus to complete their customized safety packet. The packet will be returned to your child's teacher and sent home to you on the same day.

Thank you and we look forward to keeping your family safe!

MULTIMODIAL BIOMETRICS CHILD SAFETY PROGRAM

Yearly updates are recommended as children grow and software changes

Options marked with "↓" are highly recommended by law enforcement

Child's Name:	Cell Phone #
Teacher's Name :	Parent E-Mail:

Biometric Packet Choices:		
↓ Police Recommended Vaulting-Please mark if you are interested in having your safety packet vaulted and monitored by Permanent Impressions. Fingerprints, iris/retinal scan and facial recognition can be instantly retrieved and disseminated by law enforcement in the event of an emergency. Information will be disseminated quickly to all agencies in the US and outside the US including the FBI & Department of Justice when time is crucial. All safety packets below can be vaulted. Please contact us regarding cost and vaulting options.	Please call for costs and details on each security tier.	Yes <input type="checkbox"/> No <input type="checkbox"/>
↓ Digital Live Scan USB Credit Card containing child photo, all 10-print information, rolled impressions, flat sequence and optional personal identifiers. Wallet-sized and easy to carry in your purse or wallet and formatted for law enforcement agencies in and outside of the US.	\$86.00	Yes <input type="checkbox"/> No <input type="checkbox"/>
USB Key containing all 10-print information, rolled impressions, flat sequence and optional personal identifiers. Includes photo and personal information card with identifiers for parent/guardian to fill-out.	\$68.00	Yes <input type="checkbox"/> No <input type="checkbox"/>
↓ Iris Scan and Facial Recognition. Iris scanning captures both visible & near-infrared light to take a clear, high contrast picture of the iris. Iris scanning is more common in high-security applications because the eye is so unique with over 200 points of reference for comparison, as opposed to 60 or 70 points in fingerprints. The Iris also does not change over time making it ideal for biometric identification. Facial recognition captures facial features/measurements and creates an algorithm by extracting facial landmarks on a face. These unique characters are measured and matched for use in identification. Images will be captured as raw data to be entered and used in an emergency situation where an algorithm will be created from the template. Images will be transferred to a USB drive or added with any of the digital fingerprint packets listed.	\$182.00	Yes <input type="checkbox"/> No <input type="checkbox"/>
↓ Digital Safety ID Bracelet containing child photo, all fingerprint impressions stored electronically within bracelet & accessible within seconds by law enforcement. Ideal for travel in & outside the US and great for theme parks and everyday use for child/parent/guardian. It is recommended to also have a back-up packet administered in the event the bracelet is lost.	\$86.00	Yes <input type="checkbox"/> No <input type="checkbox"/>
Travel ID Cards (set of two ink thumbprint impression cards w/out photo) Includes personal information card with identifiers for parent/guardian to fill-out. ID cards are only recommended in addition to a packet choice with a full set of fingerprints	\$48.00	Yes <input type="checkbox"/> No <input type="checkbox"/>
Foot Impressions right and left foot impression (administered w/ink) Includes personal information card with identifiers for parent/guardian to fill-out.	\$39.00	Yes <input type="checkbox"/> No <input type="checkbox"/>
CHECK PAYABLE TO: PERMANENT IMPRESSIONS TOTAL	\$	

Website and flyer information is limited. Please call for more details and/or specific questions

All information is confidential with no duplicate copies unless requested by parent/guardian